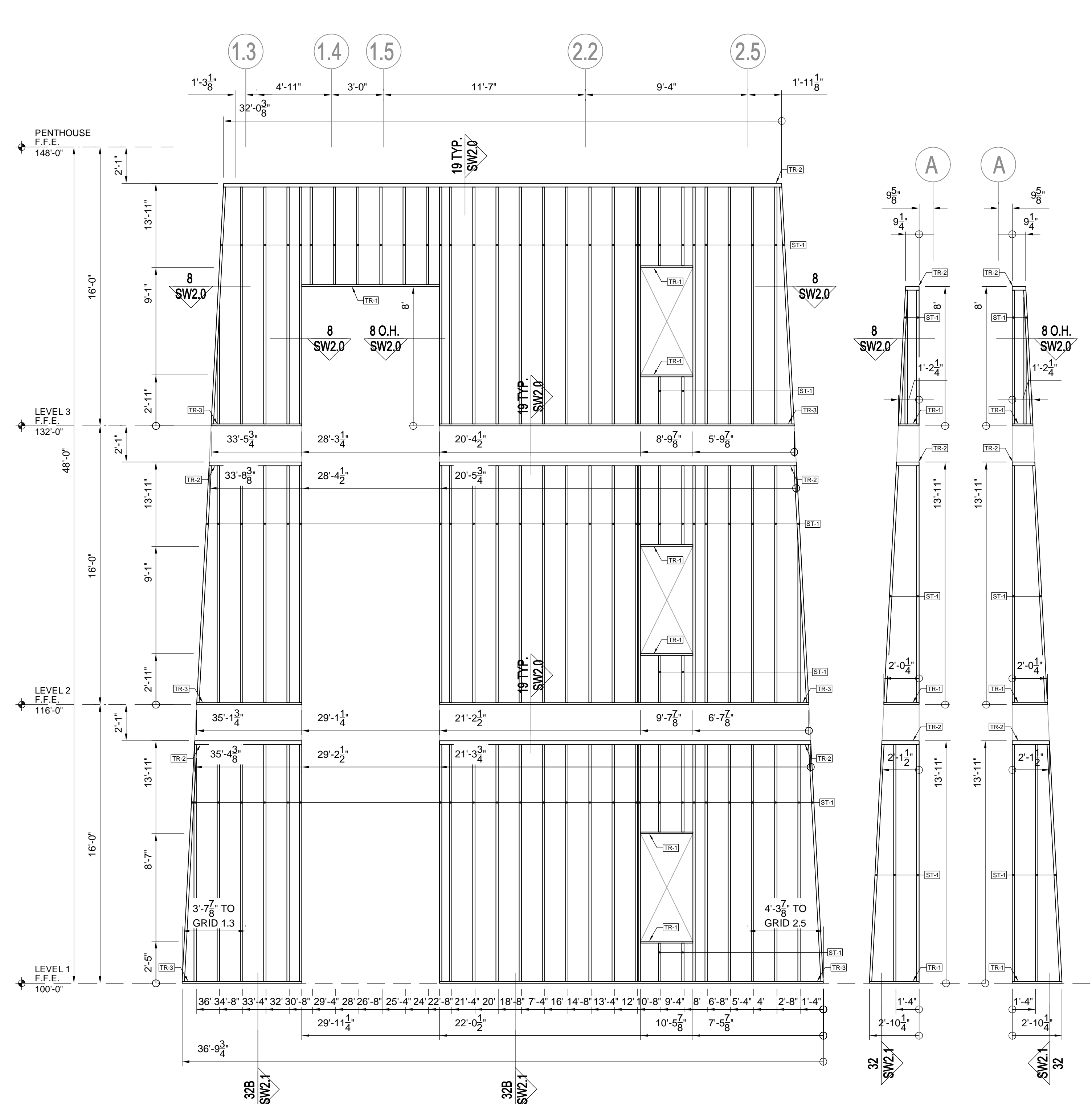


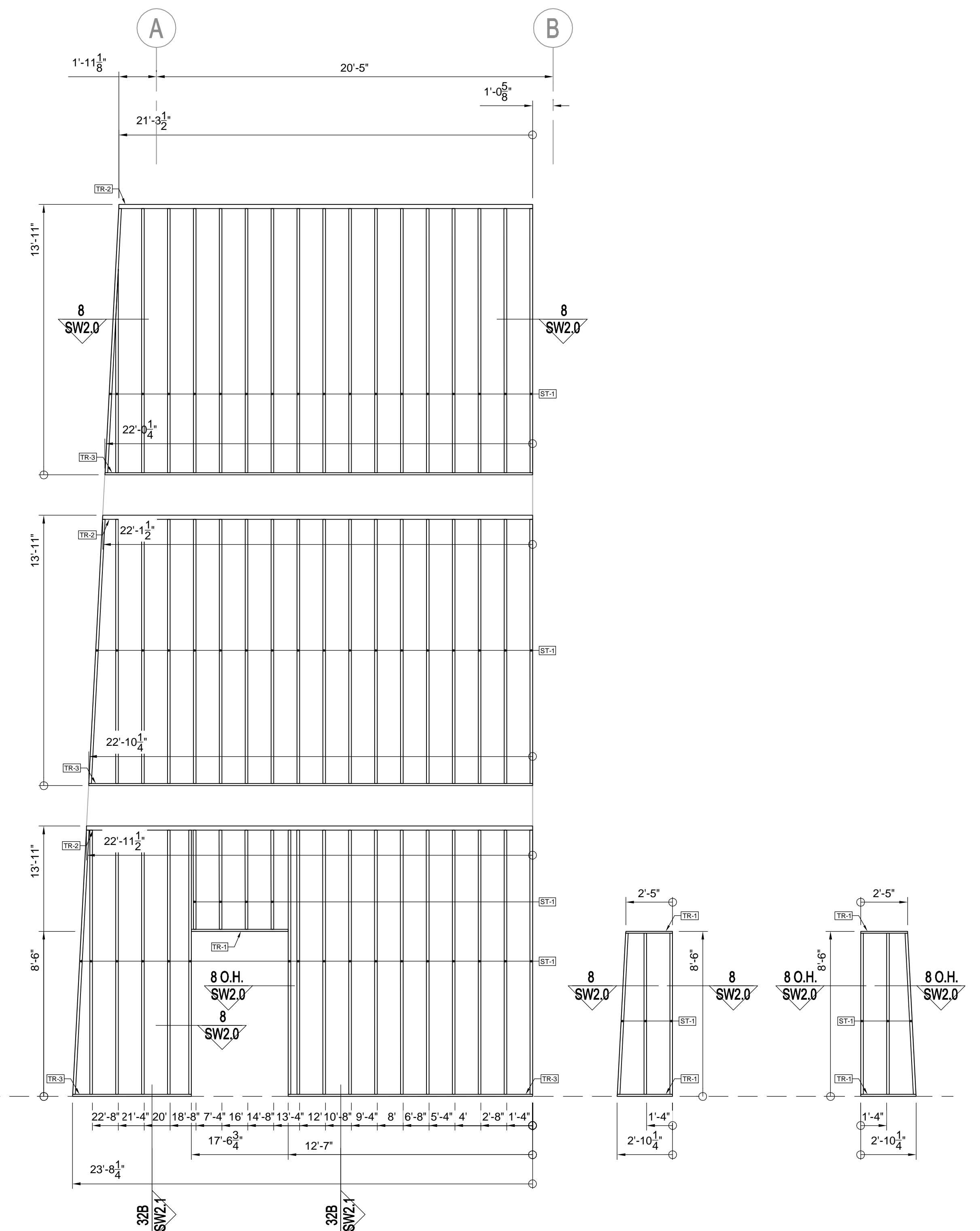
STUDS	
NO.	DESCRIPTION
ST-1	8X1.625 18 ga. STUD
ST-2	8X1.625 16ga. STUD
ST-3	6X1.625 18 ga. STUD

TRACKS	
NO.	DESCRIPTION
TR-1	8X1.25 18 ga. TRACK
TR-2	DIETRICH 8X2.5 16 ga. SLP TRK
TR-3	8.02X1.25 18 ga. TRACK W/ 8" FLANGES
TR-4	3X3 18 ga. ANGLE
TR-5	6X1.25 18 ga. TRACK
TR-6	6.02X1.25 18 ga. TRACK W/ 8" FLANGES

- NOTES
- REF. DETAIL 1A/SW1.0 FOR OPENINGS.TYP. U.N.O.
 - HEADER -X REF. DETAIL 9/SW1.0
 - SILL -X REF. DETAIL 8/SW1.0



7A BUTRESS ELEVATION
 1/4" = 1'-0"



7B BUTRESS ELEVATION
 1/4" = 1'-0"